

confree - two-way splitter with trunk or ac feed

Product information

The introduction of DKT ACP3 P1 F1300 is our most recent addition to the highly successful series of DKT's power splitters serving networks all over Europe. The frequency range has now been enhanced to meet Docsis 3.1 requirements.

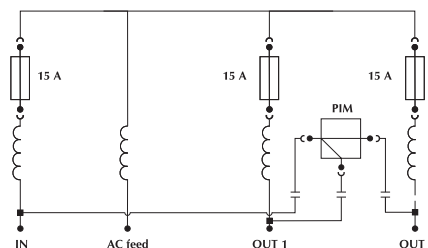
With the DKT ACP3 P1 F1300 we have focused on designing the most compact unit with a flexible choice for the specific network setup and to save inventory costs. Additionally, it can be used as a platform for power insertion through placement of bridge plug-in modules. The compact size makes installation in even small street cabinets possible.

The electrical performance is in compliance with CENELEC's highest standards just as in the case with the other DKT products.

ACP3 P1 F1300 Item no. 41651

Frequency range 5-1300 MHz

PIM type	Item no	Unit	Out 1	Out 2
PIM 0A 1G3	40530	(dB)	0.6 ± 1.0	-
PIM 0B 1G3	40531	(dB)	-	0.6 ± 1.0
PIM 4 1G3	40533	(dB)	4.7 ± 1.0	4.7 ± 1.0
PIM 1-7 1G3	40534	(dB)	7.9 ± 1.5	2.9 ± 1.0
PIM 1-10 1G3	40535	(dB)	10.9 ± 1.5	2.4 ± 1.0
PIM 1-13 1G3	40536	(dB)	13.4 ± 1.5	1.7 ± 1.0
PIM 1-16 1G3	40537	(dB)	15.9 ± 1.5	1.4 ± 1.0
PIM 1-19 1G3	40538	(dB)	18.9 ± 1.5	1.3 ± 1.0
PIM 1-22 1G3	40539	(dB)	22.0 ± 1.5	1.3 ± 1.0
PIM 1-26 1G3	40544	(dB)	26.0 ± 1.5	1.3 ± 1.0
Frequency range	(MHz)		5-1218	
Return loss	(dB)	5 - 10 MHz	≥ 16	
		10 - 1300 MHz	Grade 2 ¹	
Connector		PG11 thread - optional 5/8" or cable shells		
Power pass		Max 10 A		
Screening effectiveness		Class A ²		
Hum modulation (64 V, 6 A)		< - 70 dB		
Dimensions	(mm)	154 x 107 x 55		
Weight	(kg)	0.8		

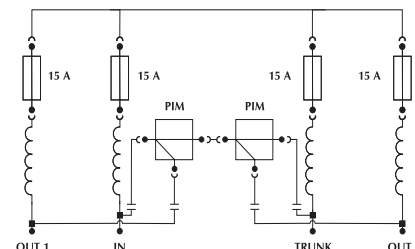


- ¹ Return Loss: EN60728-4 Grade 2
10-47 MHz ≥ 18 dB
47-1300 MHz min. 18 dB ÷ 1.5/oct. and min. 14dB
- ² Screening Effectiveness: EN60728-2 Class A
5-300 MHz ≥ 85 dB, 300-470 MHz ≥ 80 dB
470-950 MHz ≥ 75 dB, 950-1300 MHz ≥ 65 dB

ACP4 P2 Item no. 41604

Frequency range 5-1000 MHz

PIM type	Item no	Unit	Out 1	Out 2	Trunk output
Frequency range		(MHz)	5-1006		
PIM 4 + PIM 4	40533/40533	(dB)	4 ± 1.0	8 ± 1.0	8 ± 0.5
PIM 1-7 + PIM 4	40534/40533	(dB)	7.5 ± 1.0	6.5 ± 1.0	6.5 ± 0.5
PIM 1-10 + PIM 1-7	40535/40534	(dB)	11 ± 1.0	9 ± 1.0	4 ± 0.5
PIM 1-13 + PIM 1-13	40536/40536	(dB)	13.5 ± 1.0	14.5 ± 1.0	3 ± 0.5
PIM 1-16 + PIM 1-16	40537/40537	(dB)	16 ± 1.0	17 ± 1.0	2.2 ± 0.5
PIM 1-19 + PIM 1-19	40538/40538	(dB)	19 ± 1.0	19.5 ± 1.0	2 ± 0.5



- ¹ Return Loss: EN60728-4 Grade 2
10-47 MHz ≥ 18 dB
47-1000 MHz min. 18 dB ÷ 1.5/oct. and min. 14dB
- ² Screening Effectiveness: EN60728-2 Class A
5-300 MHz ≥ 85 dB, 300-470 MHz ≥ 80 dB
470-950 MHz ≥ 75 dB, 950-1000 MHz ≥ 65 dB

Connector		PG11 thread - optional 5/8" or cable shells
Power pass		Max 10 A
Hum modulation (64 V, 6 A)		< - 70 dB
Dimensions	(mm)	154 x 107 x 55
Weight	(kg)	0.8